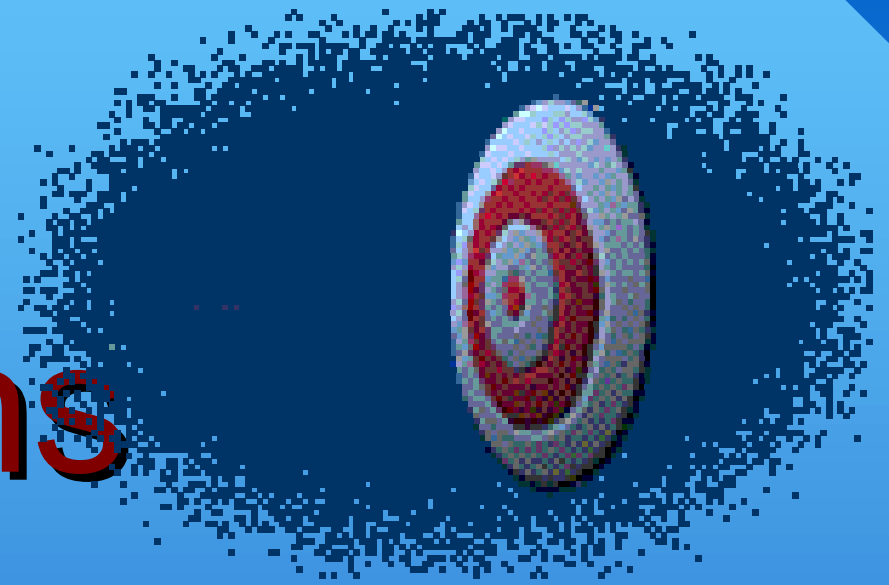


Target Populations



In

Sonoma County's Project E.S.P.

Roy Redlich

Program Development Manager

Economic Assistance

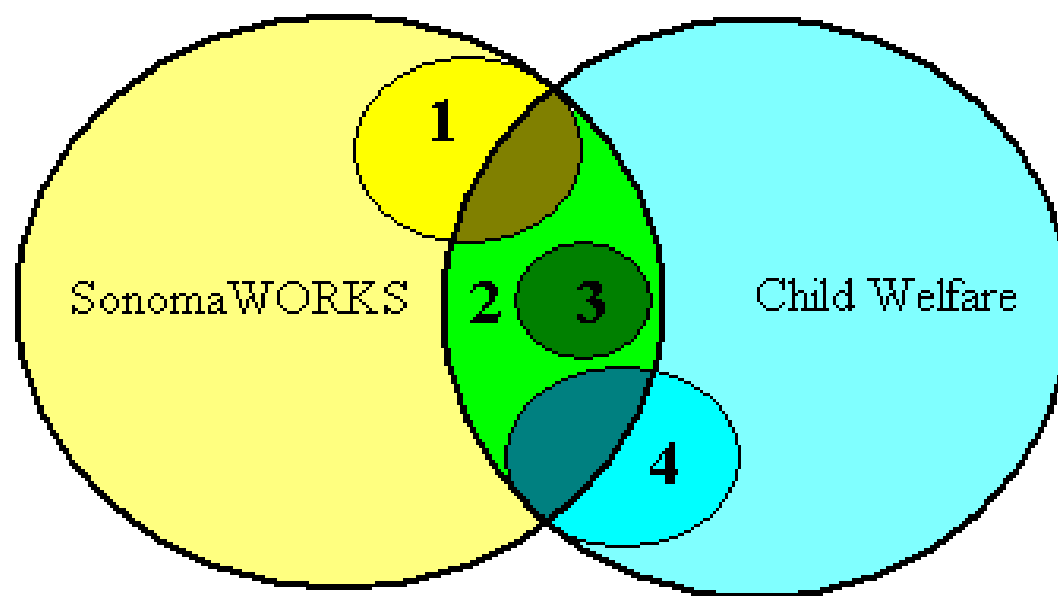
Sonoma County Human Services Department

Linkages II - October 28, 2004

Target Populations

- 1. Cases Referred to the MDT**
- 2. Mutual Cases**
- 3. Child-only Cases**
- 4. Referrals to WIA Services by Child Welfare**

Project E.S.P. Target Populations



Target Population 1: Cases referred to the MDT process

Target Population 2: All mutual cases

Target Population 3: Mutual cases in the SonomaWORKS
"child-only" caseloads

Target Population 4: Unemployed/underemployed adults
active to child welfare services referred to E&T services

In CWS

Not In CWS

Not In CalWORKs

In CalWORKs

In CWS but not in CalWORKs	In CWS and in CalWORKs
Not in CalWORKs and not in CWS	In CalWORKs but not in CWS

1. Cases Referred to the MDT

- **SonomaWORKS participants with problems meeting their program requirements**
- **They may be involved in child welfare or at risk of child welfare involvement**
- **The Team has reviewed about 45 cases**

Out of the First 40 Cases

- **18 were not in sanctions or non-compliance**
- **13 who were at risk of sanctions avoided sanctions by working with the MDT**
- **4 had their sanctions cured by working with the MDT**
- **5 remained in sanctions after working with the MDT**

Follow up on 27 of the Cases

- 4 are working and doing well
- 3 are on SSI, another's SSI aid is pending
- 4 moved out of the county
- 5 have exemptions, and another two are pending exemptions
- 2 are being served by the Learning Disabilities program
- No follow-up information was available on 6

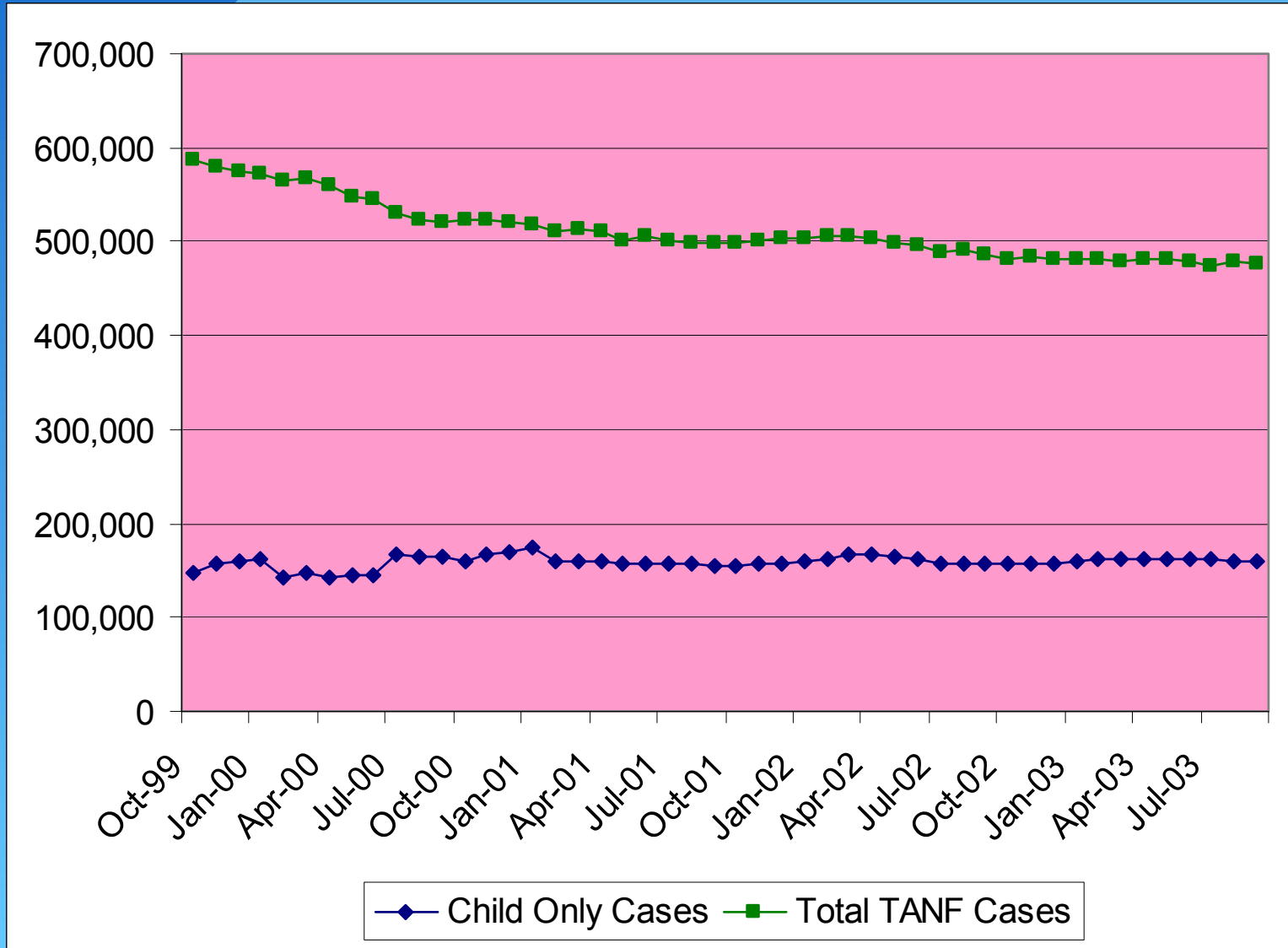
2. Mutual Cases

- **Cases are identified through a manual search as well as an automated report**
- **In August 2004 we had 133 mutual cases**
- **Ten cases are selected randomly each quarter and reviewed for evidence of services coordination**
- **Follow-up is done on those cases where documentation could not be found**

3. Child-only Cases

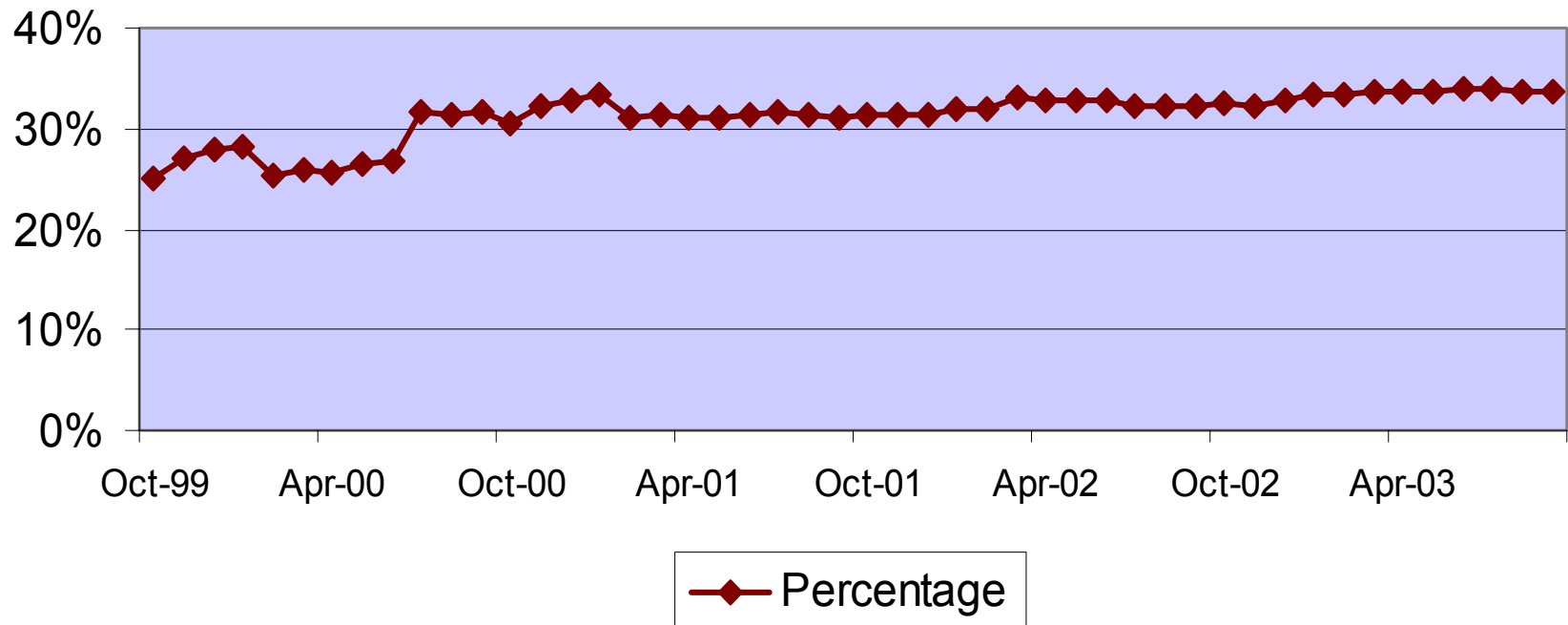
- **A subset of the mutual client caseload**
- **In August there were 39 child-only cases**
- **In June a BSW Intern conducted interviews with eleven child-only cases**

California Caseloads



California Caseloads

Child-Only Caseload as a Portion of the Total



Research Findings from a Sample of Child-Only Cases

- 7 were relative caretakers, 3 were undocumented non-citizens, and 1 was an SSI recipient
- 7 were English-speaking, 4 were Spanish-speaking
- 5 were Caucasian, 4 were Hispanic, 1 was African American, and 1 was Native American
- 8 were employed, 3 were unemployed

Research Findings – Cont'd

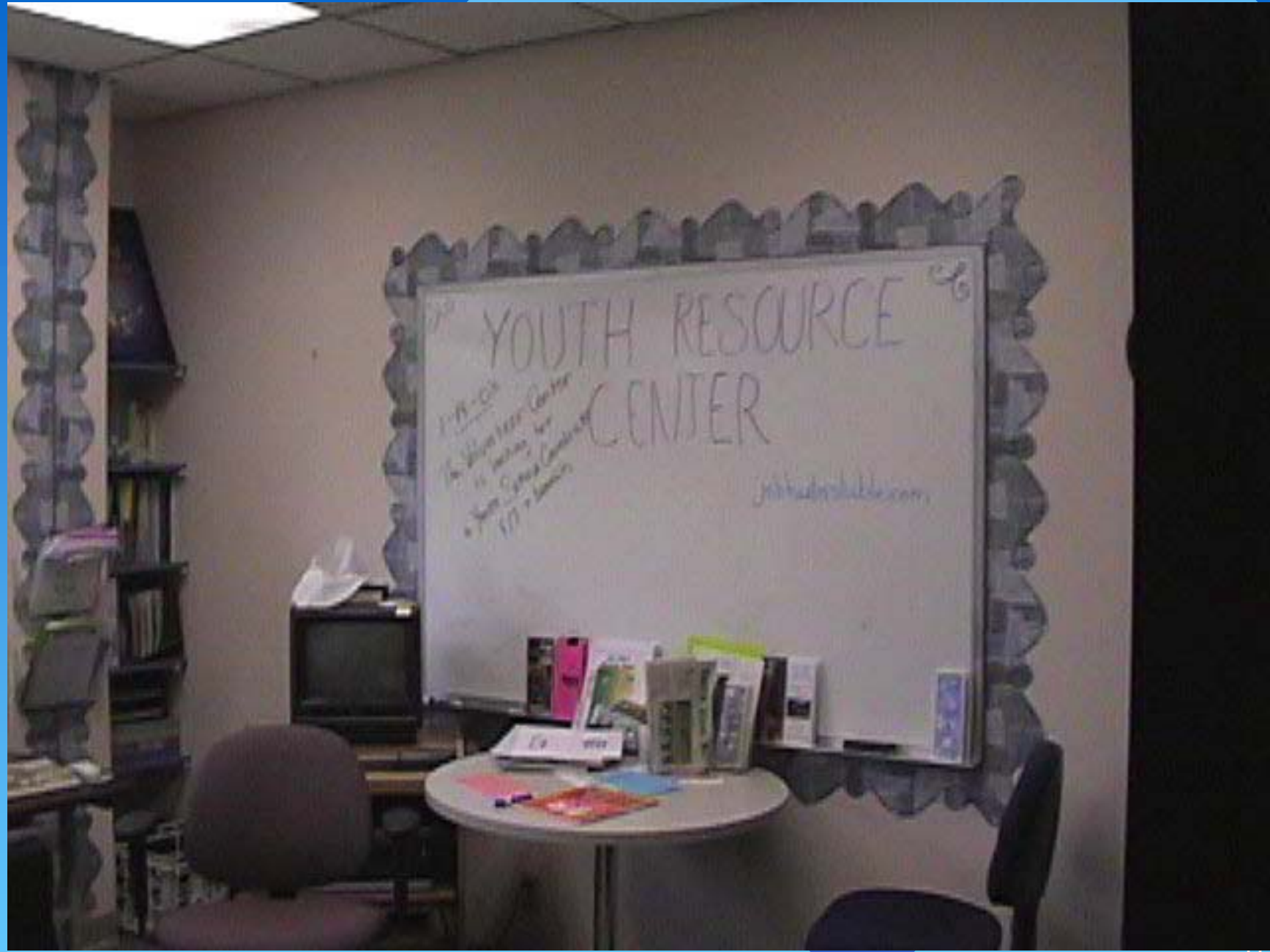
- **When asked who their “worker” was the relative caregivers and SSI recipient all identified their child welfare social worker**
- **The undocumented non-citizens all identified their TANF eligibility worker**
- **Each caretaker had very different responses to a question regarding unmet needs**

4. Cases Referred to WIA

- **An automated report tells us when adults active to child welfare services visit Job Link, the county's employment one-stop center**
- **In the 3 months prior to mid August, 11 clients made a total of 39 visits**
- **Two ILP social workers are outstationed at Job Link**







Sonoma County's Project E.S.P.



Questions?

Contact:

Roy Redlich, Program Development Manager,
Economic Assistance

Sonoma County Human Services Department

Phone: 707-565-2173

E-mail: rredlich@schsd.org